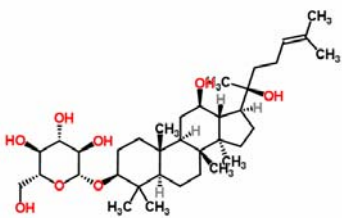


Certificate of Analysis

Product Name	20(S)-Ginsenoside Rh ₂ / 20(S)-人参皂昔 Rh ₂	
Catalog Number	10006	
Lot Number	100061	

Chemical Name	20(S)-Ginsenoside Rh ₂
Chemical Formula	C ₃₆ H ₆₂ O ₈
Chemical Family	Saponin
Molecular Weight	622.88
CAS Number	78214-33-2
Appearance (Color)	White
Appearance (Form)	Powder

Analytical Test

Test	Result
Identity by LC/MS Analysis	Consistent with structure
Purity by HPLC-DAD Analysis	≥98.0%

Storage Conditions:

Storage:	Refer to label
Before use:	Keep container tightly closed

TLCM certifies that this standard meets the specifications stated in this certificate and warrants this product to meet the stated criteria. Warranty does not apply after opening.

Date of Certificate: 05/02/2013

Product Analysis Report

Analytical Test

Test	Results
Identity by LC/MS Analysis	Consistent with structure
Purity by HPLC-DAD Analysis	≥98.0%

Spectral and Physical Data

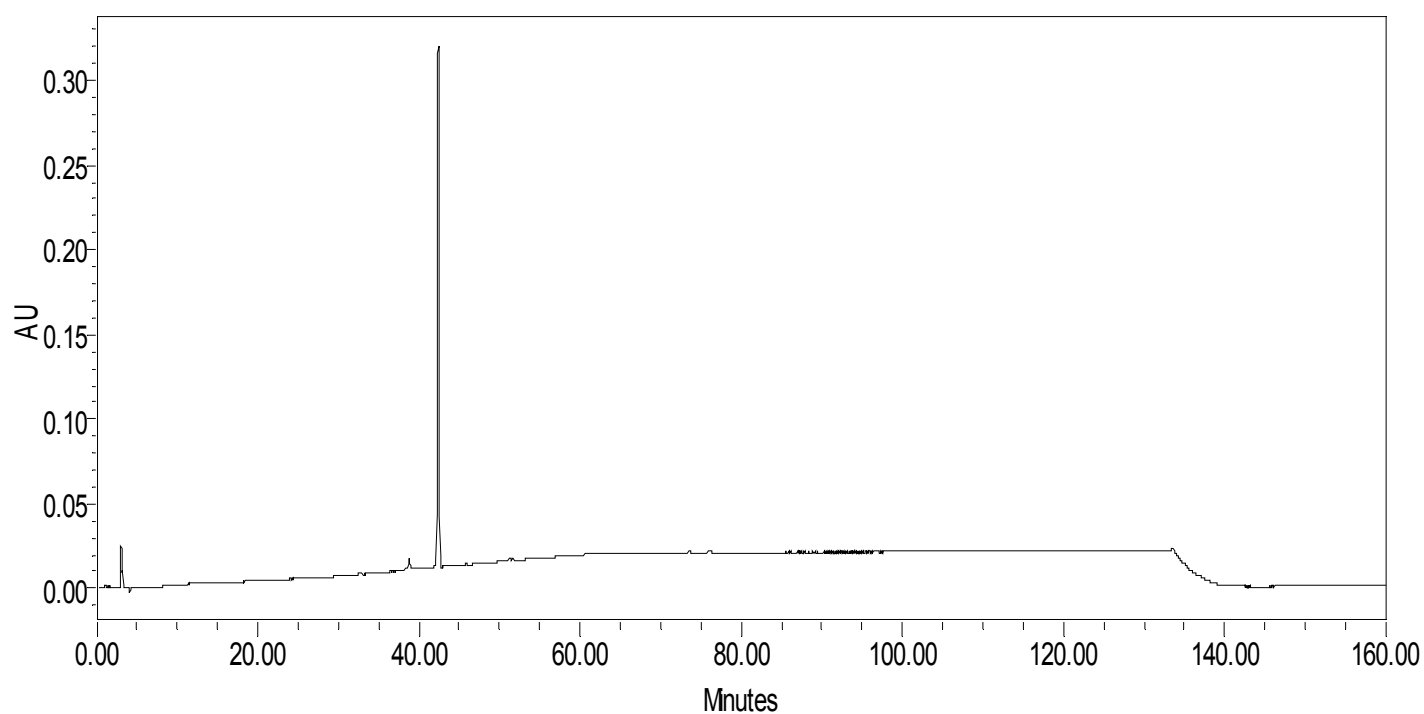
HPLC

HPLC system : Waters 2695
Column : Inertsil, C18, 4.6 x 250 mm, 5µm or equivalent
Injection volume : 10 µl
Detector : DAD
Detector wavelength : 203 nm
Flow rate : 1.0 mL/min
Mobile phase :

Time (min)	% H ₂ O	% ACN	Flow rate (mL/min)
0 → 60	90→10	0→90	1.0
60 → 160	10	90	1.0

Date File Name : E-C:\backup project\ChemicalMarkers
Operator : DUAN Ran
Sample Lot Number : 100061
Method File : RSRH2-TEST
Acquired : 31/10/2012

I. HPLC chromatogram



Product	RT (min)	Area (mAu*s)	Relative Area %
20(S)-Ginsenoside Rh ₂	42.414	3747523	100