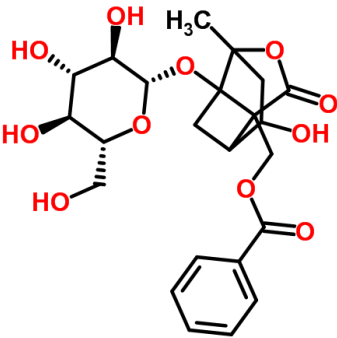


## Certificate of Analysis

<b>Product Name</b>	Albiflorin/芍藥內酯昔	
<b>Catalog Number</b>	11001	
<b>Lot Number</b>	110011	

<b>Chemical Name</b>	<b>Albiflorin</b>
<b>Chemical Formula</b>	<b>C<sub>23</sub>H<sub>28</sub>O<sub>11</sub></b>
<b>Chemical Family</b>	<b>Terpenoids</b>
<b>Molecular Weight</b>	<b>480.46</b>
<b>CAS Number</b>	<b>39011-90-0</b>
<b>Appearance (Color)</b>	<b>White</b>
<b>Appearance (Form)</b>	<b>Powder</b>

### Analytical Test

Test	Result
Identity by LC/MS Analysis	Consistent with structure
Purity by HPLC/PDA Analysis	≥ 98.0%

### Storage Conditions:

<b>Storage:</b>	<b>Refer to label</b>
<b>Before use:</b>	<b>Keep container tightly closed</b>

*TLCM certifies that this standard meets the specifications stated in this certificate and warrants this product to meet the stated criteria. Warranty does not apply after opening.*

Date of Certificate: 23/01/2013

## Product Analysis Report

### Analytical Test

Test	Results
Identity by LC/MS Analysis	Consistent with structure
Purity by HPLC/PDA Analysis	≥ 98.0%

### Spectral and Physical Data

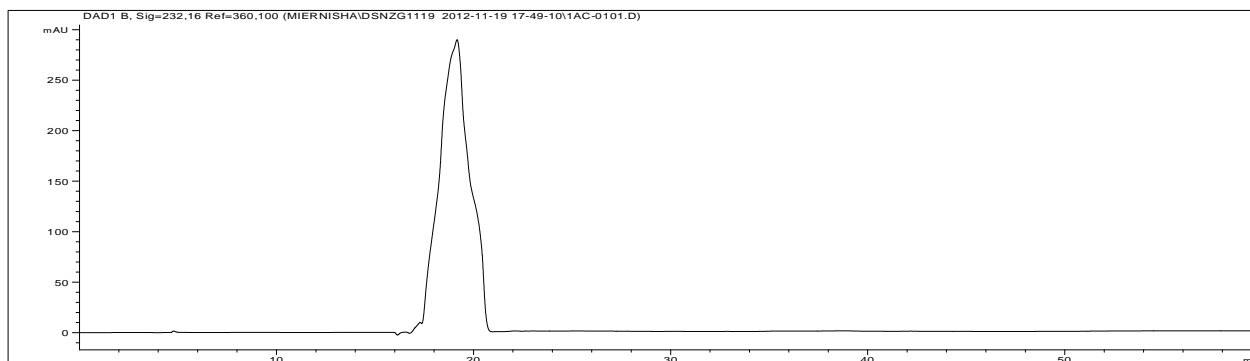
#### HPLC

HPLC system : Agilent Technologies 1200 Series  
Column : ACE, C18, 4.6 x 250 mm, 5 µm or equivalent  
Injection volume : 10 µl  
Detector : DAD  
Detector wavelength : 232 nm  
Flow rate : 0.2 mL/min  
Mobile phase :

Time (min)	% H <sub>2</sub> O (40mM Na <sub>2</sub> HPO <sub>4</sub> )	% MeOH	Flow rate (mL/min)
0→60	85	15	0.2

Date File Name : A1-D:\CHEM32\1\DATA\MIERNISHA\DSNZG 1119  
Operator : DUAN Ran  
Sample Lot Number : 110011  
Method File : DSNZG  
Acquired : 19/11/2012

I. HPLC chromatogram



Product	RT (min)	Area (mAu*s)	Relative Area %
Albiflorin	19.165	31113	99.20