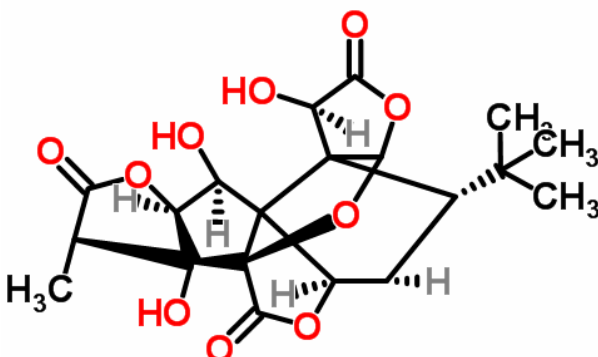


Certificate of Analysis

Product Name	Ginkgolide B/銀杏內酯 B	
Catalog Number	11018	
Lot Number	110181	

Chemical Name	Ginkgolide B
Chemical Formula	C ₂₀ H ₂₄ O ₁₀
Chemical Family	Terpenoids
Molecular Weight	424.4
CAS Number	15291-77-7
Appearance (Color)	White
Appearance (Form)	Crystal

Analytical Test

Test	Result
Identity by LC/MS Analysis	Consistent with structure
Purity by HPLC/ELSD Analysis	≥98.0%

Storage Conditions:

Storage:	Refer to label
Before use:	Keep container tightly closed

TLCM certifies that this standard meets the specifications stated in this certificate and warrants this product to meet the stated criteria. Warranty does not apply after opening.

Date of Certificate: 23/01/2013

Product Analysis Report

Analytical Test

Test	Results
Identity by LC/MS Analysis	Consistent with structure
Purity by HPLC/ELSD Analysis	≥98.0%

Spectral and Physical Data

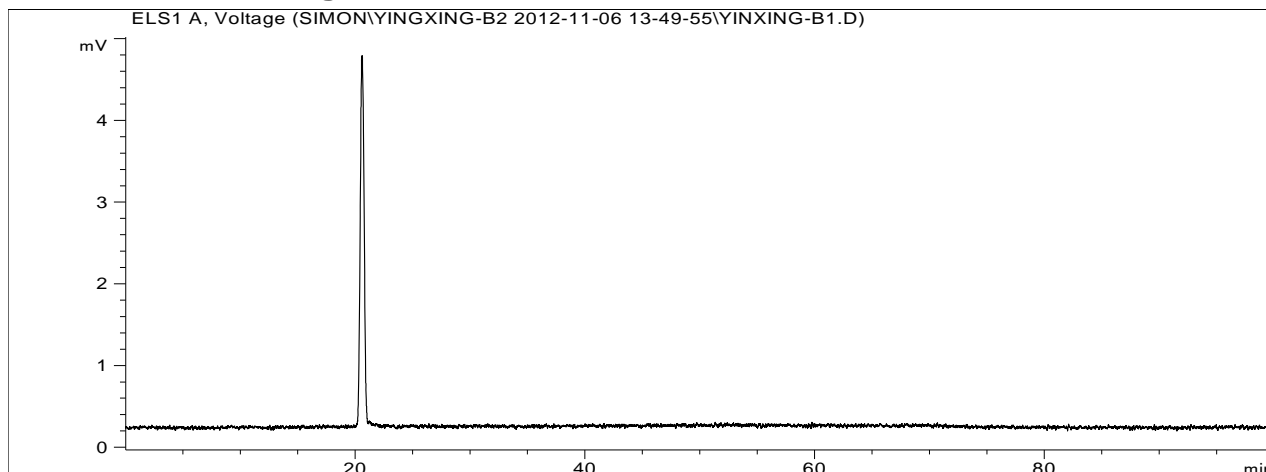
HPLC

HPLC system : Agilent Technologies 1200 Series
Column : Waters Symmetry, C18, 3.9 x 150 mm, 5 μm
or equivalent
Injection volume : 10 μl
Detector : ELSD
Detector wavelength : 102°C, N2, 2.8 L/min
Flow rate : 1.0 mL/min
Mobile phase :

Time (min)	% H ₂ O	% ACN	Flow rate (mL/min)
0 → 45	75 → 52	25 → 48	1.0

Date File Name : A1-D:\CHEM32\1\DATA\SIMON\YINGXING-B2
2012-11-06 13-49-55
Operator : DUAN Ran
Sample Lot Number : 110181
Method File : A1-D:\CHEM32\1\METHODS\SIMON.M\YINGXING-
B-3-TIMES.M
Acquired : 6/11/2012

I. HPLC chromatogram



Product	RT (min)	Area (mAu*s)	Relative Area %
Ginkgolide B	20.601	106.1	100.00