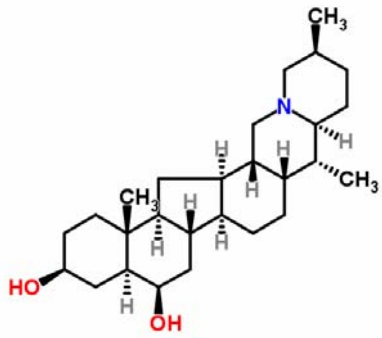


Certificate of Analysis

Product Name	Hupehenine/ 湖貝甲素	
Catalog Number	1040	
Lot Number	10403	

Chemical Name	Hupehenine
Chemical Formula	C ₂₇ H ₄₅ NO ₂
Chemical Family	Alkaloid
Molecular Weight	415.65
CAS Number	98243-57-3
Appearance (Color)	White
Appearance (Form)	Powder

Analytical Test

Test	Result
Identity by LC/MS Analysis	Consistent with structure
Purity by HPLC/DAD Analysis	≥ 98.0%

Storage Conditions:

Storage:	Refer to label
Before use:	Keep container tightly closed

TLCM certifies that this standard meets the specifications stated in this certificate and warrants this product to meet the stated criteria. Warranty does not apply after opening.

Chop: _____

Date: 29/05/2013

Product Analysis Report

Analytical Test

Test	Results
Identity by LC/MS Analysis	Consistent with structure
Purity by HPLC/DAD Analysis	≥ 98.0%

Spectral and Physical Data

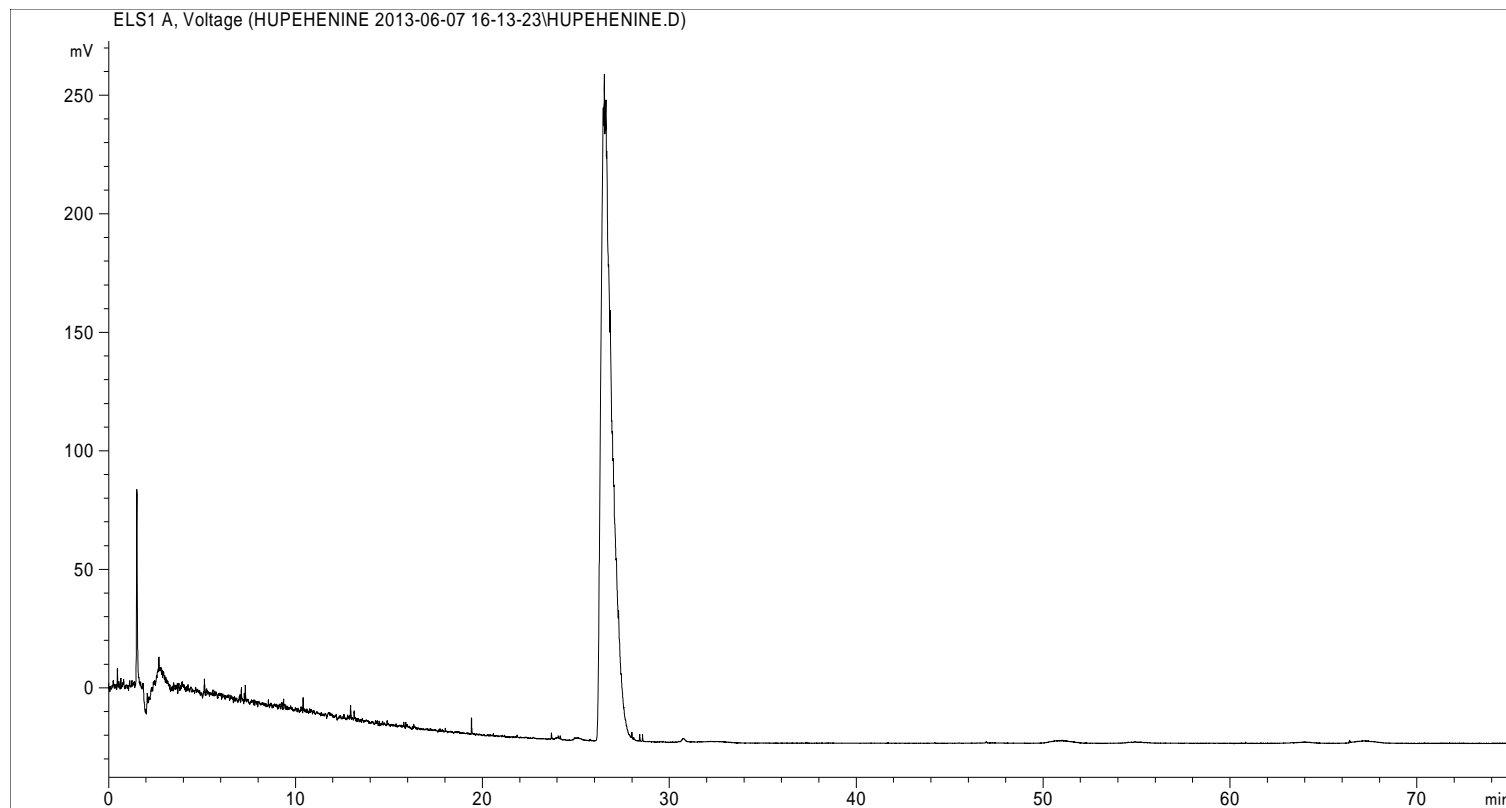
HPLC

HPLC system : Agilent Technologies 1200 Series
Column : ACE, C18, 4.6 x 250 mm, 5 μ m or equivalent
Injection volume : 10 μ l
Detector : ELSD
Tube temperature : 88 $^{\circ}$ C
N₂ Gas : 3.5 bar
Mobile phase flow rate : 1.0 mL/min
Mobile phase :

Time (min)	0.02% Triethylamine	% ACN	Flow rate (mL/min)
0 \rightarrow 30	40 \rightarrow 5	60 \rightarrow 95	1.0

Date File Name : A1-D:\Chem32\2\purity test\data
Operator : DUAN Ran
Sample Lot Number : 10403
Method File : D:\Chem32\2\method\HUPEHENINE
Acquired : 2013-05-29

I. HPLC chromatogram



Product	RT (min)	Area (mAu*s)	Relative Area %
Hupehenine	26.53	10978.7	100